

**TEXOUT**

PRECONTRAIN  
302

COVER TEXTILES

#### TIPOLOGIA

Tessuto poliestere 550 Dtex trattato con la tecnica di spalmatura FERRARI® PRECONTRAIINT.

#### CARATTERISTICHE

Eccezionale stabilità dimensionale e resistenza meccanica. Superficie perfettamente planare e notevole durata nel tempo. Peso ridotto che facilita l'avvolgimento grazie alla tecnologia PRECONTRAIINT. Confezionamento senza rinforzi laterali. Rivestimento liscio antimacchia. Gamma colori innovativa. Ignifugo secondo le norme italiane CL.2, tedesche B1 e francesi M2. 5 anni di garanzia.

#### UTILIZZI

Elevate performance con tende a bracci, capottine, gazebo e strutture fisse.

#### TIPOLOGY

PVC coated Polyester 550 Dtex. FERRARI® PRECONTRAIINT coating technology.

#### FEATURES

Excellent dimensional stability and high tear and tensile resistance. Perfectly flat surface. High durability. Its light weight, thanks to the Preconstraint Technology, allows an easier rolling up. Confectioning with no need of side reinforce. Dirt- resistant smooth surface. Wide range of trendy and innovative colours. Flame retardant according to Italian CL.2, German B1 and French M2 standards. 5-year-warranty.

#### APPLICATIONS

High performance on retractable awnings, Dutch canopies, gazebos and fixed structures.

#### TIPOLOGIE

Polyestergewebe 550 Dtex mit PVC-Beschichtung in Préconstraint Ferrari Technologie.

#### EIGENSCHAFTEN

Außerdentliche Flächenstabilität und mechanischer Widerstand. Perfekte Spannung ohne Faltenwurf und lange Lebensdauer. Erleichtertes Aufrollen durch reduziertes Gewicht. Konfektion ohne seitliche Verstärkung. Trendige Farbpalette. Schmutzabweisend. Schwerentflammbar nach der italienischen Norm CL.2, nach der deutschen Norm B1 und französischen M2 Norm. 5 Jahre Garantie.

#### ANWENDUNGEN

Hohe Leistung bei Gelenkarmmarkisen, Korbmarkisen und Pavillons.

#### TIPOLOGIE

Toile polyester avec enduction PVC. Technique d'enduction: FERRARI® PRECONTRAIINT.

#### CARACTÉRISTIQUES

Planéité, stabilité et résistance mécanique exceptionnelles dans le temps. Le poids faible de la toile et la technologie Préconstraint permettent un enroulement régulier et facile. La toile peut être confectionnée sans renforts sur les cotés. Finition anti-salissures Gamme de coloris innovante. Ignifuge: CL.2 (norme italienne) B1 (norme allemande) M2 (norme française). Garantie de 5 ans.

#### APPLICATIONS

Idéal pour stores bannes, corbeilles, structures chapeau chinois et structures fixes.



SPALMATO PVC  
PVC COATED



BILACCATO  
DOUBLE-SIDE  
LACQUERED



IGNIFUGO  
FIRE RETARDANT



IMPERMEABILE  
WATERPROOF



ANTIMACCHIA  
DIRT-REPELLENT



REACH  
COMPLIANT - CONFORME AL  
REGOLAMENTO REACH



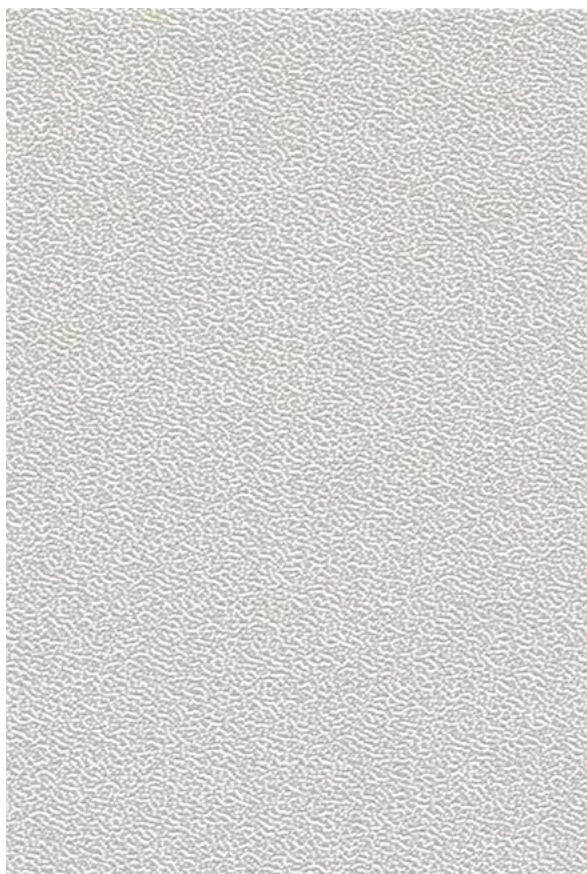
5  
ANNI GARANZIA  
YEARS WARRANTY

Per la garanzia completa, visitare [www.giovanardi.com/warranty](http://www.giovanardi.com/warranty). For complete information about warranty visit [www.giovanardi.com/warranty](http://www.giovanardi.com/warranty). Für weitere Informationen über die Garantie besuchen Sie [www.giovanardi.com/warranty](http://www.giovanardi.com/warranty). Pour la garantie complète, visitez [www.giovanardi.com/warranty](http://www.giovanardi.com/warranty).



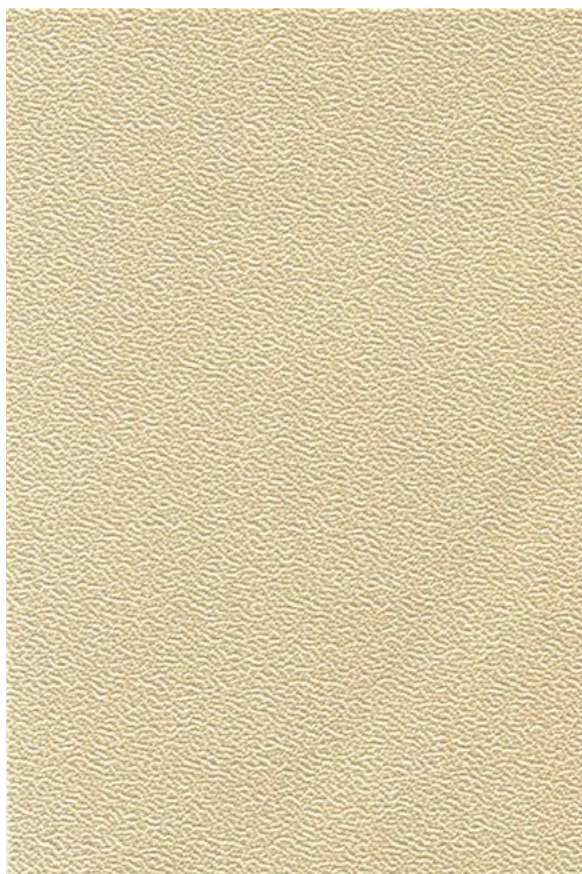
100% RICICLABILE TEXILOOP®  
100% RECYCLABLE TEXILOOP®

#### CHINÉ



822 BIANCO NUVOLA

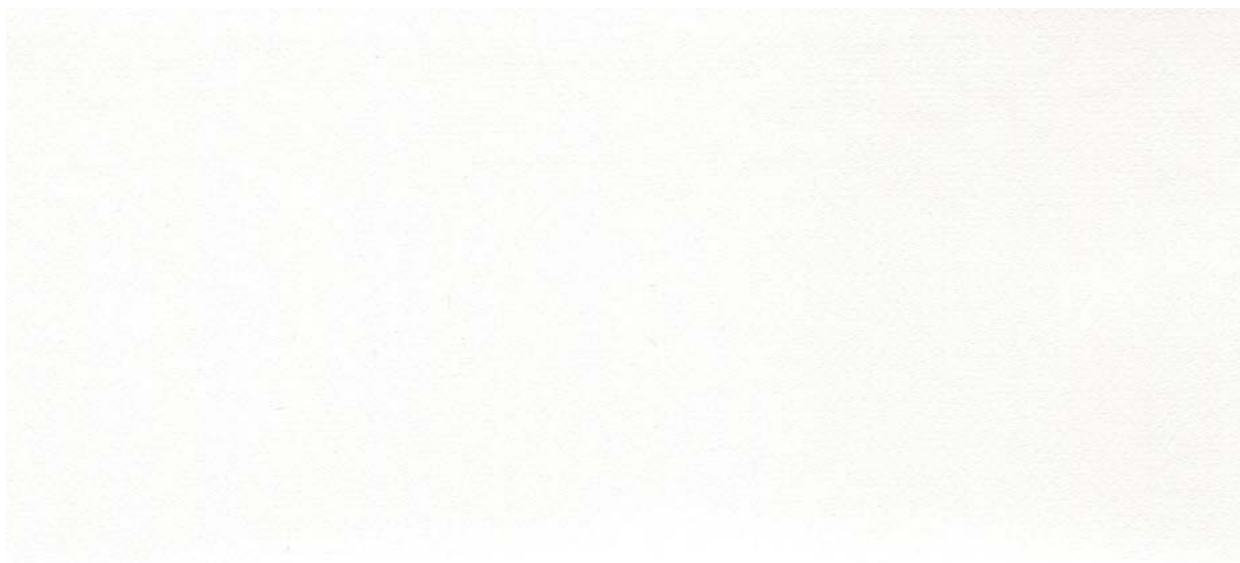
#### COD. 6357



821 BEIGE

MATT/OPACO

COD. 6338



239 BIANCO



816 BIANCO PERLA



237 GHIACCIO



241 AVORIO



377 CANAPA



544 SABBIA



165 GRIGIO TAUPE



328 NOCE



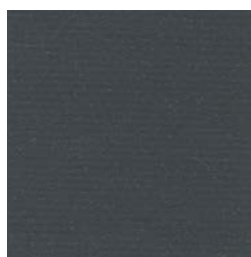
236 BORDEAUX



814 VERDE SCURO



331 GRIGIO



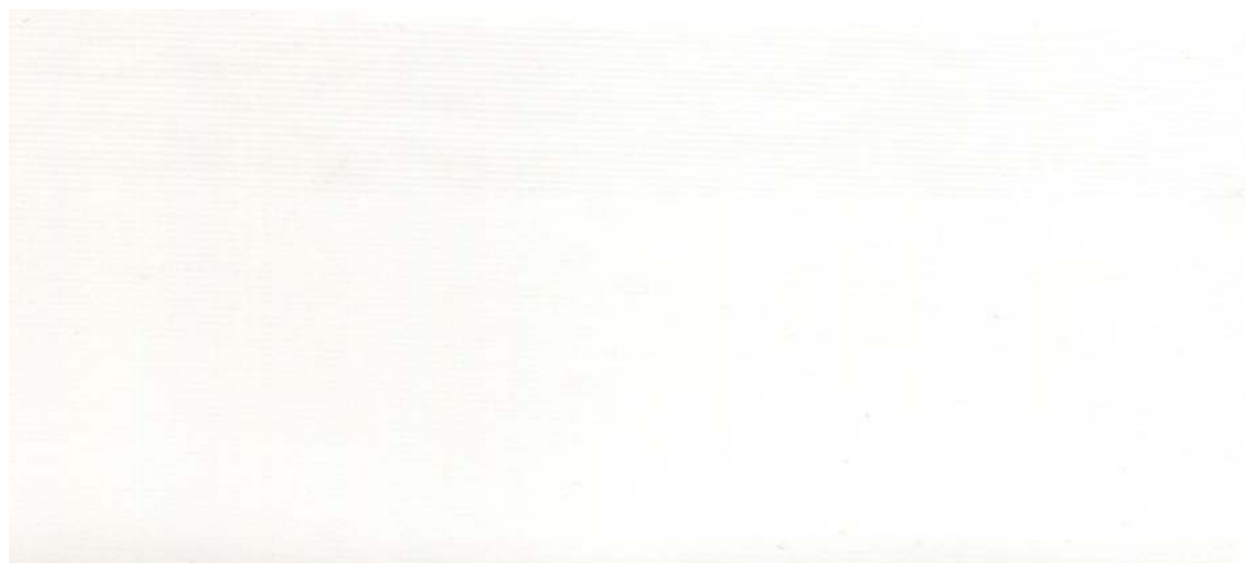
378 ANTRACITE



405 NERO

GLOSSY/LUCIDO

COD. 6338



8100 BIANCO



1498 BIANCO PERLA



741 AVORIO



1093 SABBIA



1118 GHIACCIO



006 GIALLO



1001 BEIGE



199 GIALLO

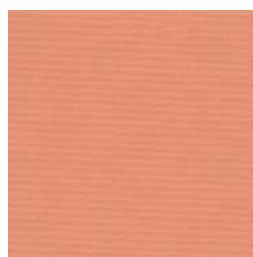


861 BEIGE

1496 OCRA



1497 MATTONE



1116 SALMONE



255 ROSSO



8284 BORDEAUX



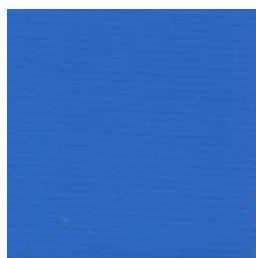
1115 MARRONE



060 VERDE CHIARO



056 VERDE SCURO



003 CARAIBI



001 BLU



390 GRIGIO



358 GRIGIO



400 ARGENTO



450 NERO

#### BICOLOR/BICOLORE

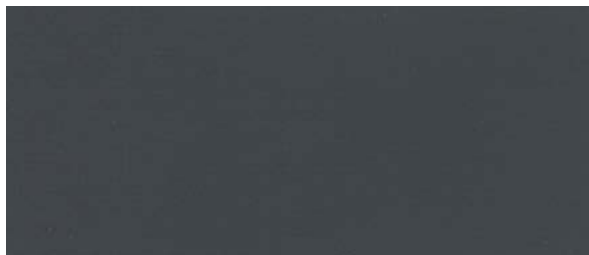
COD. 6348



50630 BORDEAUX



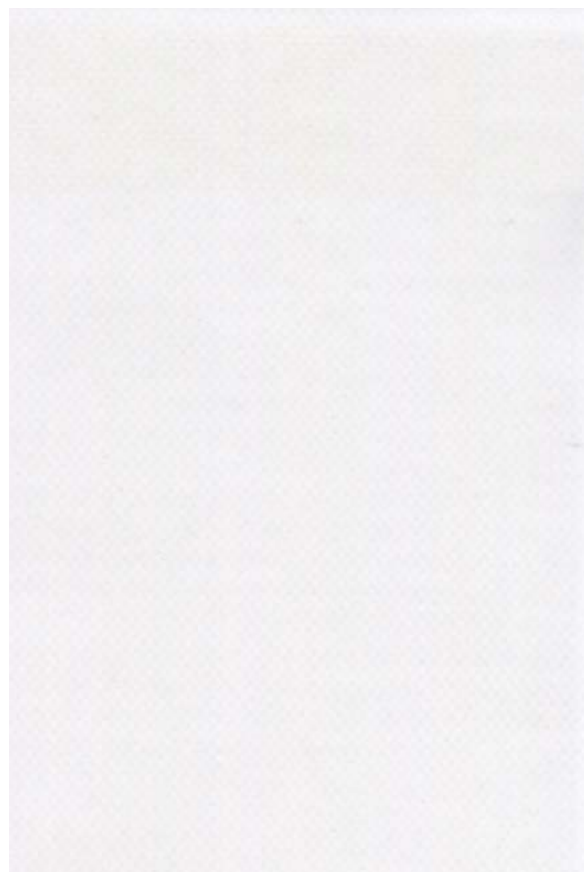
50631 VERDE



50632 GRIGIO

#### BACK-LIT

COD. 6351



100 BIANCO TRASLUCENTE

**STRIPES/RIGATI PARI**

**COD. 6349**



168 BIANCO/GIALLO

 8 cm



274 BIANCO/ROSSO

 8 cm



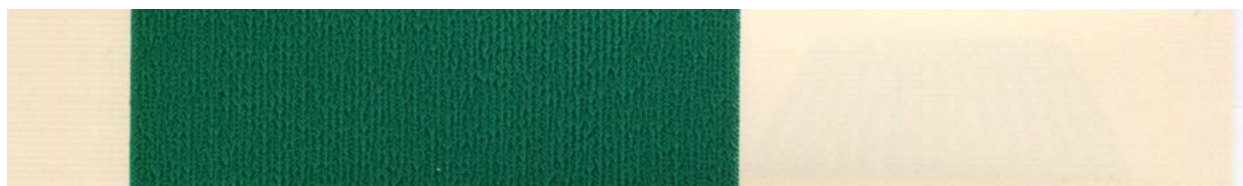
510 BEIGE/ROSSO

 8 cm



108 BIANCO/VERDE

 8 cm



511 BEIGE/VERDE

 8 cm



035 BIANCO/BLU

 8 cm



111 BIANCO/GRIGIO

 8 cm

COD. 6357 CHINÉ  
 COD. 6338 MATT/OPACO  
 COD. 6338 GLOSSY/LUCIDO  
 COD. 6349 STRIPES/RIGATI PARI  
 COD. 6348 BICOLOR/BICOLORE  
 COD. 6351 BACK-LIT

		IT	EN	DE	FR
<b>Filato / Yarn / Garn / Fil</b>	<b>6357/6338 6338/6349 6348/6351</b>	ordito: poliestere 550 Dtex trama: poliestere 550 Dtex	warp: polyester 550 Dtex weft: polyester 550 Dtex	Kette: Polyester 550 Dtex Schuss: Polyester 550 Dtex	chaîne: polyester 550 Dtex trame: polyester 550 Dtex
<b>Spalmatura / Coating / Beschichtung / Enduction</b>	<b>6357/6338 6338/6349 6348/6351</b>	PVC	PVC	PVC	PVC
<b>Spessore / Thickness / Stärke / Epaisseur</b>	<b>6357/6338 6338/6349 6351</b>	0,36 mm	0,36 mm	0,36 mm	0,36 mm
	<b>6348</b>	0,47 mm	0,47 mm	0,47 mm	0,47 mm
<b>Peso tessuto / Weight / Gewicht / Poids</b>	<b>6357/6338 6338/6349 6351</b>	ca 490 g/m <sup>2</sup>	ca 490 g/m <sup>2</sup>	ca 490 g/m <sup>2</sup>	ca 490 g/m <sup>2</sup>
	<b>6348</b>	ca 600 g/m <sup>2</sup>	ca 600 g/m <sup>2</sup>	ca 600 g/m <sup>2</sup>	ca 600 g/m <sup>2</sup>
<b>Ignifugazione / Flammability / Entflammbarkeit / Ignifugation Bs2d0</b>	<b>6357/6338 6338/6349 6348/6351</b>	CL 2 (UNI 9177) B1 (DE: DIN 4102) M2 (FR: NFP 92.503) EUROCLASSE: Bs2d0	CL 2 (UNI 9177) B1 (DE: DIN 4102) M2 (FR: NFP 92.503) EUROCLASSE: Bs2d0	CL 2 (UNI 9177) B1 (DE: DIN 4102) M2 (FR: NFP 92.503) EUROCLASSE: Bs2d0	CL 2 (UNI 9177) B1 (DE: DIN 4102) M2 (FR: NFP 92.503) EUROCLASSE: Bs2d0
<b>Finissaggio Finishing Schlusslack Finition</b>	<b>6357/6338 6338/6349 6348/6351</b>	laccato lucido o con laccatura opaca, impermeabile e antimacchia	shiny lacquered or with matt lacquer, water-proof, dirt- resistant	Hochglanz und bei einigen Farben auch eine matte Variante. wasserdicht, schmutzabweisend.	vernis brillant ou mat, impermeable, anti-salissure.
<b>Resistenza alla trazione Breaking strength Reißkraft Résistance à la traction (EN-ISO 1421)</b>	<b>6357/6338 6338/6349 6348/6351</b>	ordito: ca 140 DaN/5 cm trama: ca 150 DaN/5 cm	warp: ca 140 DaN/5 cm weft: ca 150 DaN/5 cm	Kette: ca 140 DaN/5 cm Schuss: ca 150 DaN/5 cm	chaîne: ca 140 DaN/5 cm trame: ca 150 DaN/5 cm
<b>Resistenza allo strappo Tear strength Weiterreißfestigkeit Résistance à la déchirure (DIN 53363)</b>	<b>6357/6338 6338/6349 6348/6351</b>	ordito: ca 10 DaN/5 cm trama: ca 12 DaN/5cm	warp: ca 10 DaN/5 cm weft: ca 12 DaN/5 cm	Kette: ca 10 DaN/5 cm Schuss: ca 12 DaN/5 cm	chaîne: ca 10 DaN/5 cm trame: ca 12 DaN/5 cm
<b>Resistenza alla luce Resistance to ligh Lichtbeständigkeit Résistance à la lumière (ISO 105 B02)</b>	<b>6357/6338 6338/6349 6348/6351</b>	livello 7/8	Level 7/8	Niveau 7/8	niveau 7/8
<b>Resistenza alle temperature Temperature resistance Temperaturbeständigkeit Résistance aux températures</b>	<b>6357/6338 6338/6349 6348/6351</b>	+70°C / -30°C	+70°C / -30°C	+70°C / -30°C	+70°C / -30°C
<b>Aderenza / Adhesion / Haftung / Adhérence (IVK/PKT 14)</b>	<b>6357/6338 6338/6349 6348/6351</b>	ca 7 DaN/5	ca 7 DaN/5	ca 7 DaN/5	ca 7 DaN/5
<b>Disponibilità / Availability / Verfügbarkeit / Disponibilité</b>	<b>6357/6338 6338/6349 6348/6351</b>	standard in magazzino	on stock	auf Lager	en stock
	<b>6349</b>	178 cm	178 cm	178 cm	178 cm
<b>Altezza del tessuto Roll width Breite Laize</b>	<b>6357/6338 6338/6348 6351</b>	180 cm	180 cm	180 cm	180 cm
	<b>6349</b>	178 cm	178 cm	178 cm	178 cm
<b>Lunghezza rotolo / Roll length / Rollenlänge / Longueur de la pièce</b>	<b>6357/6338 6338/6349 6348/6351</b>	ca 50 m	ca 50 m	ca 50 m	ca 50 m







**UTILIZZI**

- Tende a bracci
- Capottine
- Gazebo
- Strutture fisse

**APPLICATIONS**

- Retractable awnings
- Dutch canopies
- Gazebos
- Fixed structures

**ANWENDUNG**

- Gelenkarmmarkisen
- Korbmarkisen
- Pavillons
- Schutztunnel

**APPLICATIONS**

- Stores bannes
- Corbeilles
- Structures chapeau chinois
- Structures fixes

**COLLEZIONE 2018/2021** I dati tecnici possono subire variazioni a seconda dei lotti di produzione e sono soggetti a tolleranza di  $\pm 5\%$   
**COLLECTION 2018/2021** The technical data can vary according to production lots and are subject to a  $\pm 5\%$  tolerance.  
**KOLLEKTION 2018/2021** Die technischen Daten sind mittlere Werte mit einer Toleranz von  $\pm 5\%$   
**COLLECTION 2018/2021** Les données techniques peuvent varier selon le lot de fabrication et sont sujettes à une tolérance de  $\pm 5\%$ .

